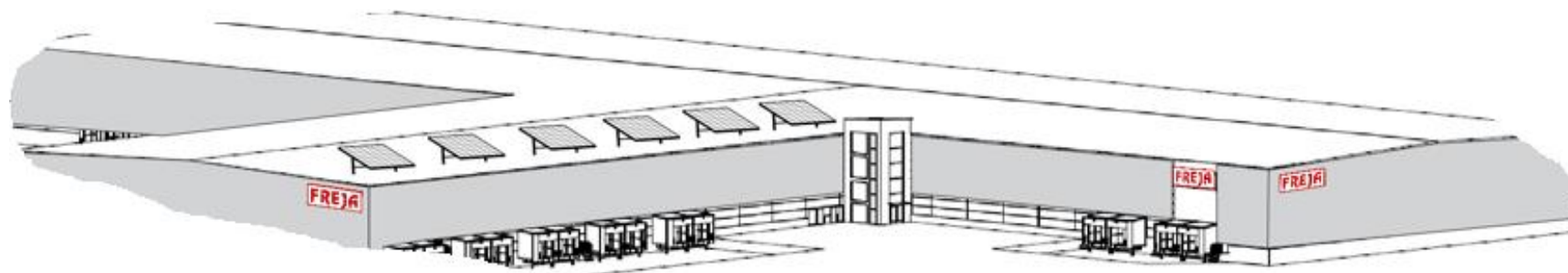




Coming 2024

NEW LOGISTICS FACILITY IN JÖNKÖPING

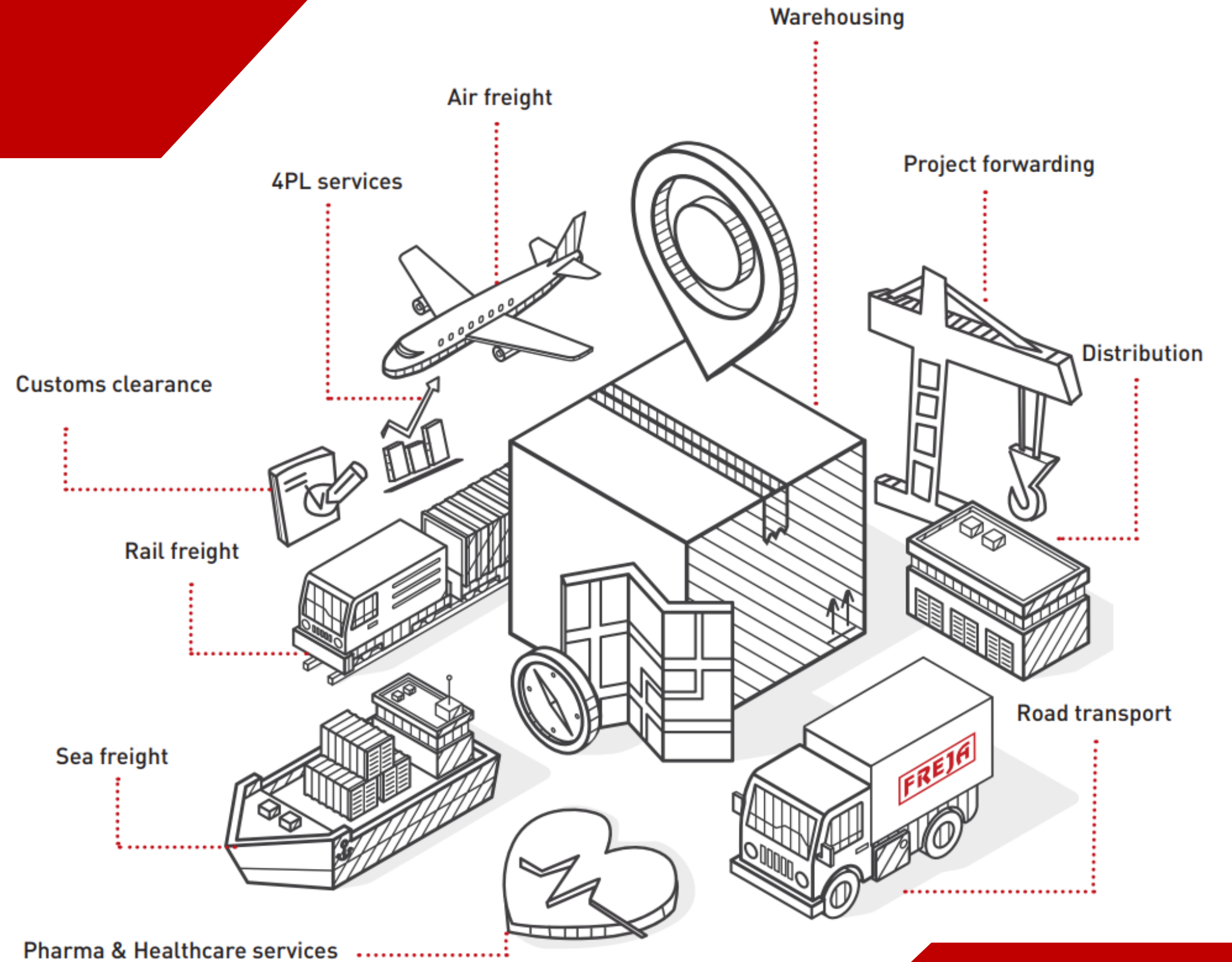


FREJA Transport & Logistics



Business areas

A one-stop solution for your supply chain



Why Jönköping?



- ▶ A strategic and central logistics location in the north
- ▶ Short lead times for most of the Nordic population
- ▶ FREJA's new warehouse is connected with E4 – perfect for transportation throughout Sweden



18.000 m²

Contract logistics and cross-docking

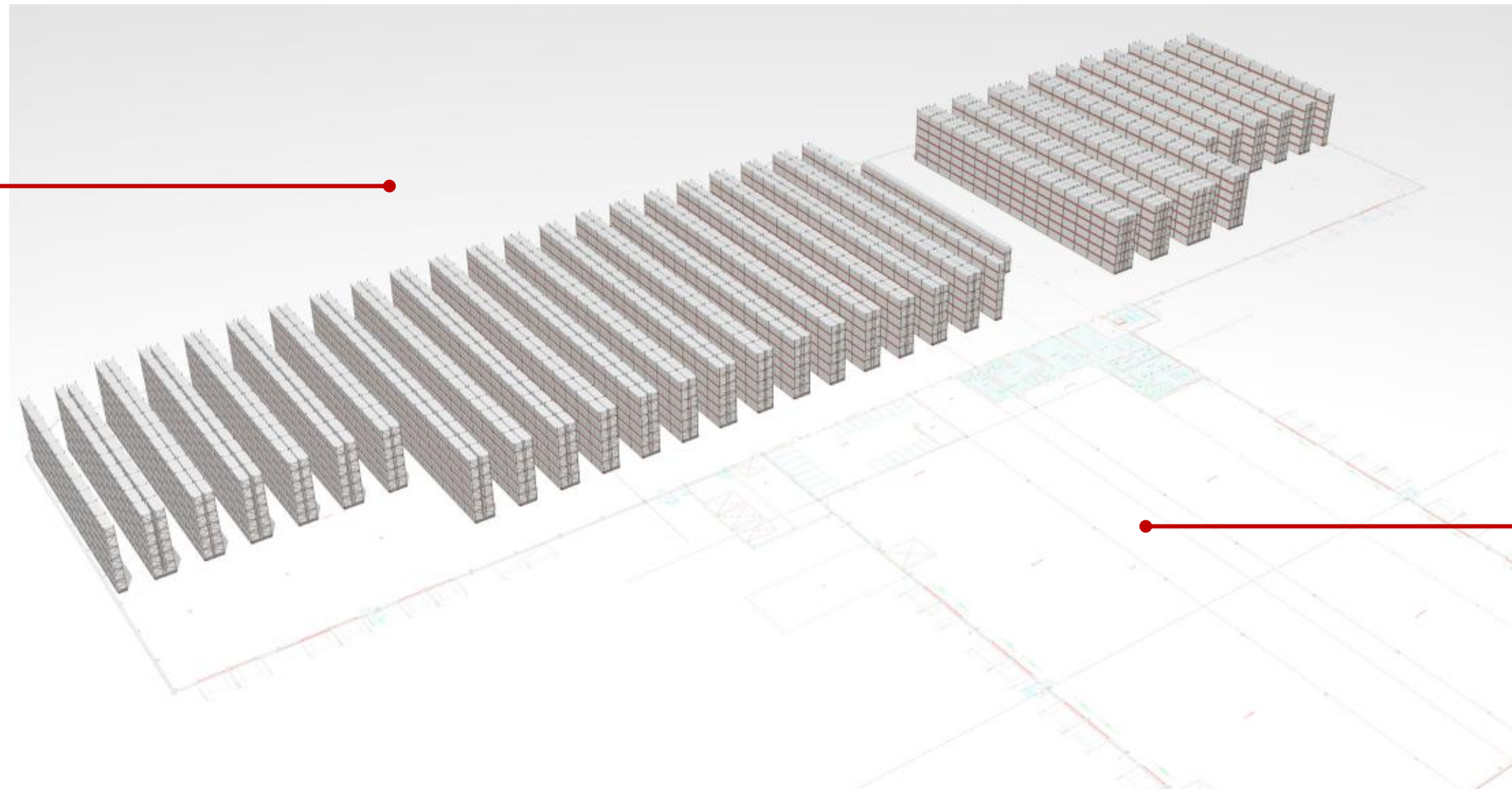
Q2 2024

Moving into the new facility

Layout

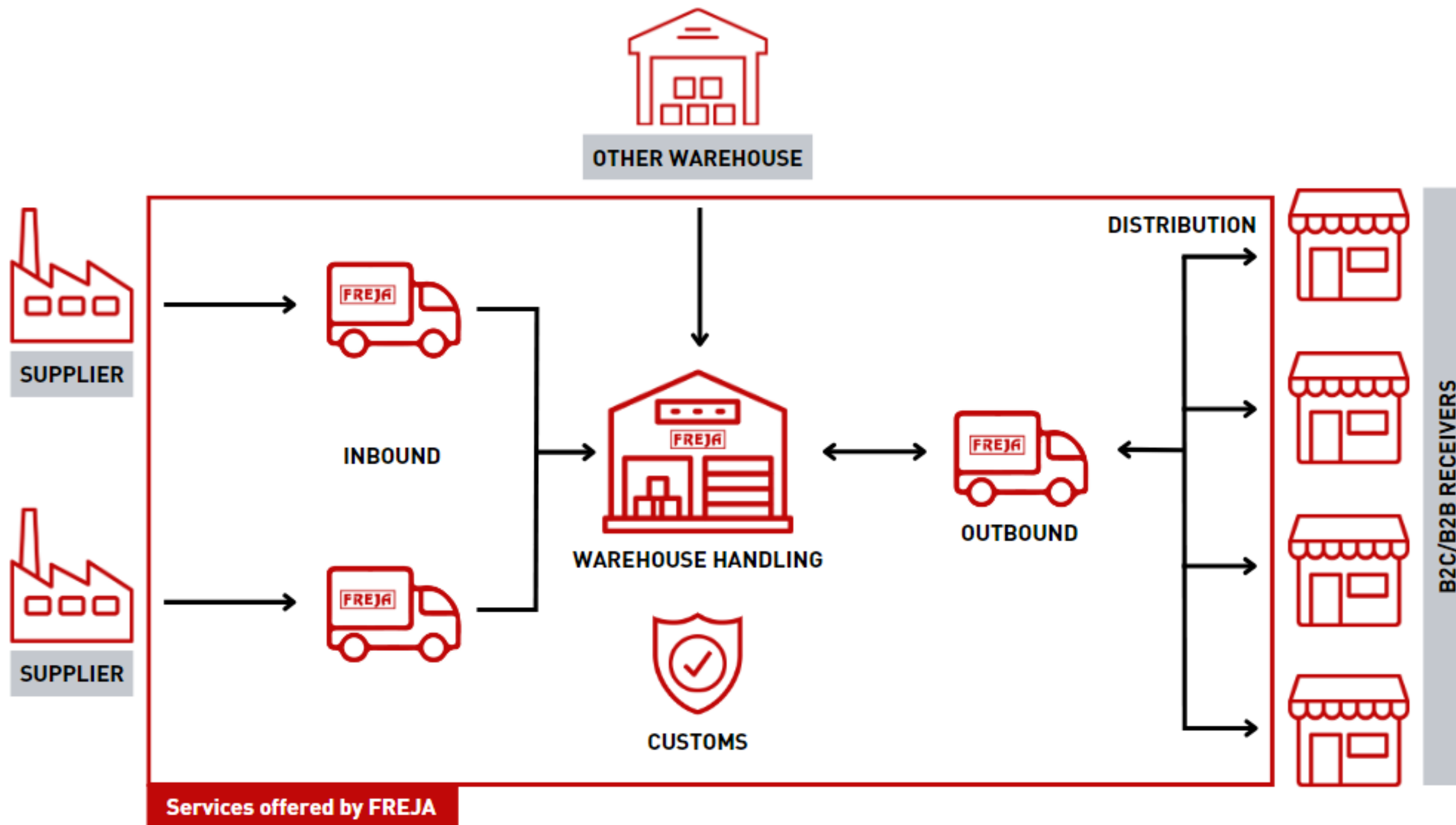


Contract logistics area
Capacity 17.000 pallets
11 docks for unloading & loading



Cross docking area
20 docks for loading & unloading

Services



IT integration

Full IT integration between Customer ERP and FREJA WMS.

KPI reporting

Tailored KPI reporting based on agreed upon KPIs.

OP Mechs

Defined meeting structure to continually review and improve operation and partnership.

View

Order and Shipment Tracking through customer portals
Warehouse View and Transport View.

Green building

Focus on environment and safety

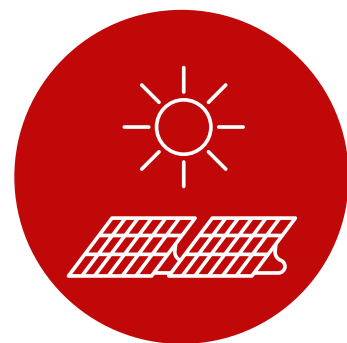
FREJA



Environment certification
(Miljöbyggnad)



Lighting with motion detectors
in the property



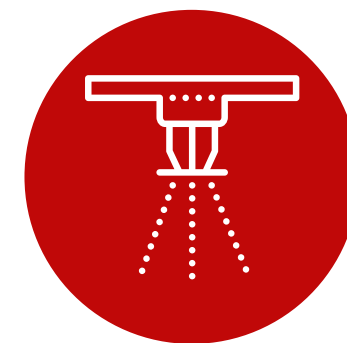
Solar system on the roof



Mono Noxite roof cloth that
provides high safety, performance
and contributes to cleaner air

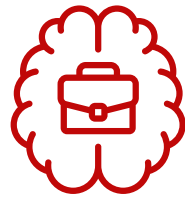


Passage/alarm system with
camera surveillance



Sprinkler system according to
current regulations

MyFREJA



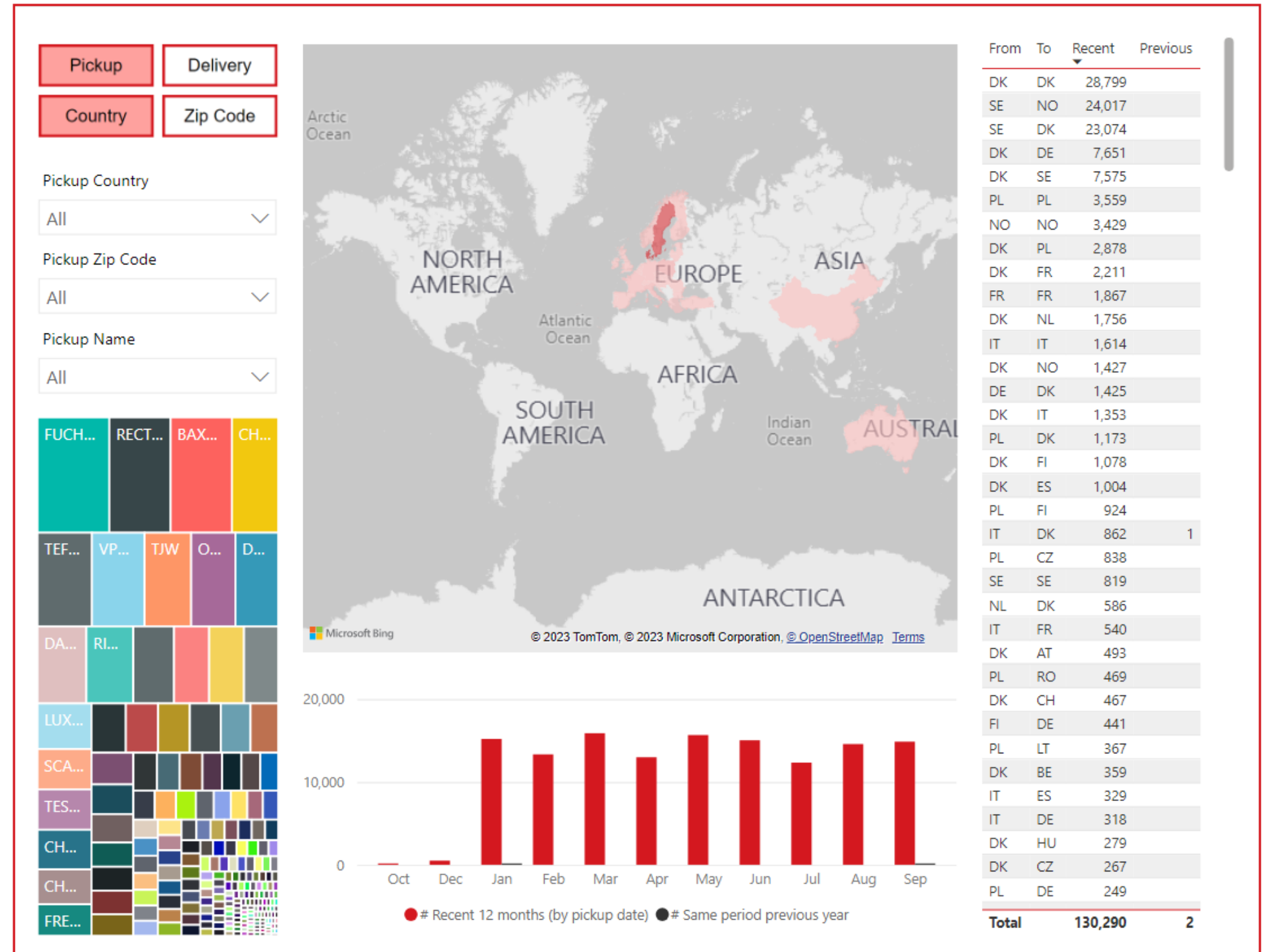
MyFREJA is FREJA's business intelligence platform, providing you with an easy overview of your FREJA activities.



MyFREJA is designed to give you the overview on all levels of your operations with FREJA – from the grand totals to the single trade lane.



MyFREJA aims at making your decision-making faster and more precise through greater transparency and a greater knowledge base.



Contact in FREJA



Niclas Andersson
Head of Logistics
nia@freja.com
+46 3618 1360



Søren Skive
Vice VD
ssk@freja.com
+46 40 680 83 88



Niklas Blomgren
Key Account Manager
nbl@freja.com
+46 3618 1351

Read more

- <https://www.freja.com/news/freja-transport-logistics-ab-expands-in-sweden-and-quadruples-capacity-in-jonkoping/>
- <https://www.freja.com/news/freja-sweden-newsletter-may-2023/#jonkoping>
- <https://www.freja.com/news/progress-for-the-new-logistics-facility-in-jonkoping/>

The logo consists of the word "FREJA" in a bold, red, sans-serif font, enclosed within a red rectangular border. The background is a blurred image of a person's face.The logo consists of the word "FREJA" in a bold, red, sans-serif font, enclosed within a red rectangular border. The background is a blurred image of a person's face.